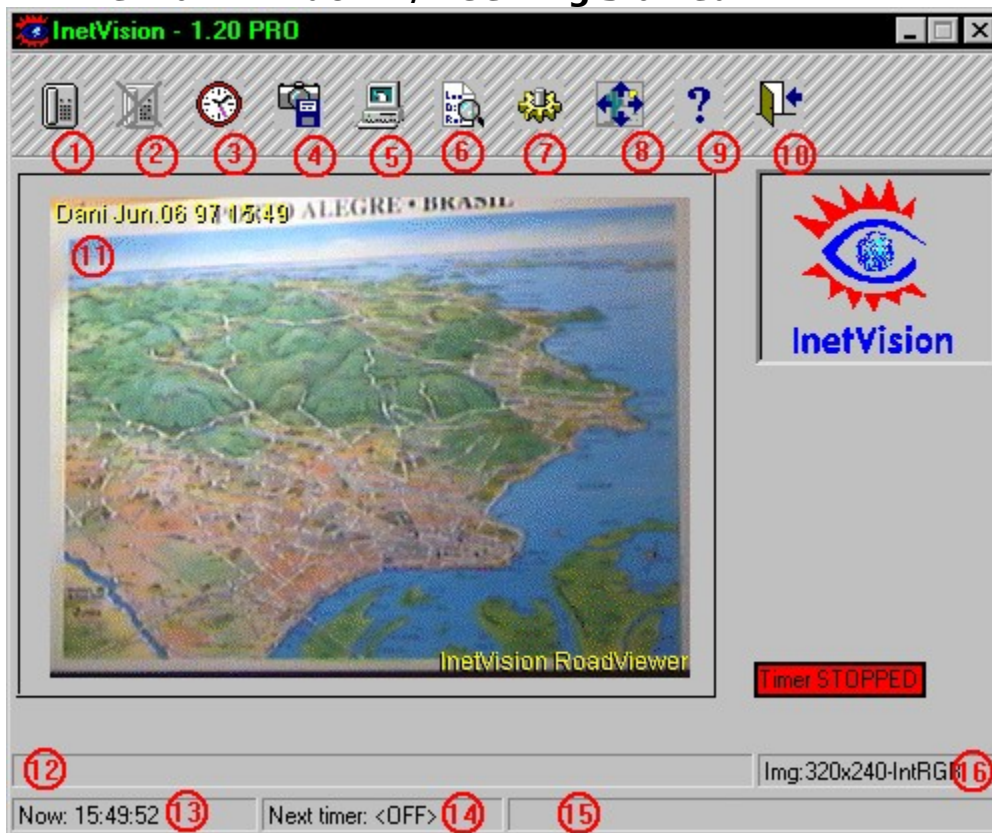




The main window / Getting started



Please also read the topic '[How to start transmitting NOW](#)' before trying to run your InetVision system...

- 1. Grab, Dial, Send, HangUp** - Takes the image (a snapshot or a video), dials and transfers the image to the ISP, via FTP (dialing and/or FTP must be previously configured and turned on). This function is important only when trying the system or for single transmissions - it's not intended for regular use, as serving a webcam.
- 2. Manual HangUp** - Abort the connection. This function is provided in order to allow you to stop the transmission manually, hanging up.
- 3. Start/Stop Automatic (scheduled) Transmissions** - After InetVision has been properly configured, this option will turn on/off the Main Timer of the program, starting the regular operation. The Main Timer is the heart of the program. If the Timer is turned off, dialing, transmission and Fido operations will not be available. When the timer is turned on, configuration, stretching, help and exit buttons will be disabled.
- 4. Grab an Image** - Captures an image immediately (as configured) and saves it in the spool directory. Use this function when you see an interesting image before the scheduled time and want to grab and save that image for later transmission.
- 5. Explore Image Folder** - Opens a Windows 95 Explorer window showing the Spool Folder for the images (this directory is configured in Configuration/Images/Disk output/Folders). You can use this functions to check whether a file have already been transmitted or not, to delete files, etc.
- 6. Show Logfile** - Displays the list of tasks the system made, including any error messages. This function is very important when you try to figure out what's going wrong with your system.
- 7. Configure the Program** - Opens the configuration window where the user tells the program how operation will be performed. Pay attention when filling in the fields. (For the new Win95 users: click the plus signs to open the tree)
- 8. Stretch Image** - Turns on/off the image stretching inside the program screen. When turned off, the image will be enlarged or shrunk to fit the window size.

9. Help - Opens this helpfile

10. Exit - Close InetVision if all pending tasks are completed and exiting is OK. (The timer must to be off to exit.)

11. Image Screen - Shows the current image in program memory.

12. Status Window - Shows various messages, errors, etc.

13. Current Time - Shows the current time, including the seconds.

14. Next Timer/ Status window 2 - When automatic transmission is turned on, this will show how much time is left until next transmission will occur.

15. Next Snapshot - When automatic transmission is turned on, this will show how much time is left until next image is captured (for example you can select to grab at each minute and to send at each 15 minutes).

16. Image Data Line - Shows the image features as size and color depth.



How to start transmitting NOW

If the main timer is running: **Turn it off** to access the configuration window. (When the timer is running the configuration button is disabled.)

1. Open the configuration window
2. Select the **Connection./ Win95** *Settings* box
3. Select the name of the Win95 Dialup networking connection you want to use
4. Enter the domain name and your username & password
5. Select the **Connection/FTP** *Parameters* box
6. Enter the FTP site you want to connect to, your FTP username & password - and optionally the directory in the FTP site.
7. Open the **Images/Source** dialog and select your video capture board - also select Setup and configure it
8. Open the **Images/Disk output** dialog and enter any filename prefix and select a folder for InetVision to store the images in
9. Open the **Timer/Main timer** dialog and enter an interval for how often to transmit
10. Press OK - and press the *Start automatic transmissions* button



How to create a link to Embramic's homepage

If you are running the light version of InetVision it is required (please consult the License.txt document) in the WEB page where you will show the InetVision image to display the logo of InetVision and a text saying you are using InetVision by Embramic Ltda - and a hyperlink to Embramic's homepage. If you are using a version different from the light version then this is optional.

Please do as follows:

1. Copy the file 'ivlogo.gif' to the directory which contain your WEB page. (This file was distributed in the InetVision installation file)
2. Insert the following HTML code in your WEB page (below the InetVision image):

```
<p>  
<center>  
<a href="http://www.embramic.com.br">  
  
</a></center>  
</p>
```



Special symbols used in this helpfile

Some special symbols are used in this helpfile to indicate that the feature being discussed is not available in all versions of InetVision. The symbols are as follows:

STD

Requires InetVision standard or a higher version

PRO Requires InetVision professional or a higher version

RV

Only available in the RoadViewer version



Making Windows 95 stable

If you use InetVision for some period of time you might experience Windows 95 crashing when InetVision is hanging up the phone line. This is caused by some bugs in Windows 95. To avoid it please do the following steps:

1. Go to Microsoft's WEB site and download the Kernel update, the Winsock update and the Service Pack 1 and install them (these are available free of charge). Make sure you select the correct language versions according to your Windows 95 installation.

2. Open the Windows 95 control panel and select the Network icon. Find "TCP/IP -> Dial-Up Adapter" in the list and click the Properties button. You will be presented with a 6-tab property sheet.

In the WINS Configuration page choose the 'Disable WINS resolution' option (unless you are actually running your machine on a local Microsoft network).

In the DNS Configuration page choose 'Enable DNS' and fill in this form correctly ('Host' is your ISP username, 'Domain' is your ISP's domain (like microsoft.com for instance). In 'DNS Server Search Order' enter the IP address of your ISP's DNS service and click Add - and in 'Domain Suffix search order' enter your ISP's domain name once again and click Add).

And that's it - in most cases your problems will be solved.



Win95 settings

Configure InetVision

Connection

Please select a connection from the list below.

Name of connection: EasyWay

Domain name: 200.248.215.10

No. of attempts: 6 Delay: 10 sec

ISP ID

Username: something Password: xxxxxxx

Hide Win95's 'Connected to...' dialog

OK

Cancel

Name of connection: This combo box will list all Win95 DialUp Networking connections on the computer. Select one from the list.

Domain name: Enter here the domain name of your ISP. This can be either in DNS form (ex. embramic.com.br) or the IP address directly (ex. 200.248.215.10)

No. of attempts: The maximum number of times the program will try to connect and send before giving up.

Delay: How many seconds to wait between one attempt and the next. It is **not** recommended to use less than 15 seconds.

Username: The username you use to connect to your ISP

Password: Like above

Hide Win95's 'Connected to...' dialog: This will hide the dialog box Windows show when you are connected. (Cosmetic purpose only)



FTP parameters

Configure InetVision

FTP Server

FTP site: 200.248.215.10

Initial directory: a_folder

FTP Username and password

Username: nothing

Password: XXXXXXXXXX

OK

Cancel

FTP site: Either the DNS name or the IP address of the FTP site you want to transmit data.

Initial directory: This is the folder you want the data to be transmitted to.

Please note that this is relative to the directory the FTP server puts you in when connecting - it is not the absolute directory ! So if you log on and is placed in **200.248.215.10\testing** and want to put the data in the subdirectory called **\test1**, i.e. **200.248.215.10\testing\test1** you should enter **only test1** in this box.

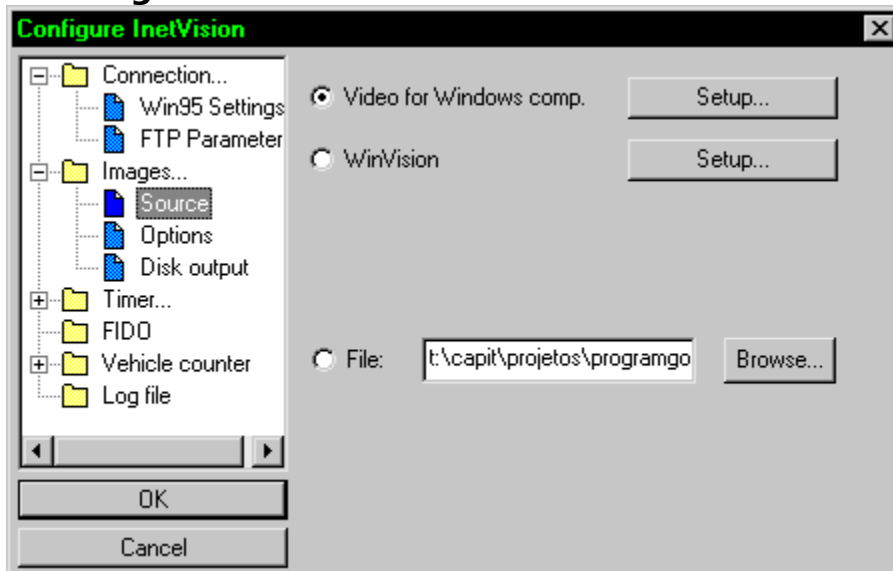
If you want a deeper directory enter for instance test1\subdir1\subdir2

It is irrelevant if you use backslash - \ or slash - / in this box.

Username and password: The username and password you must use to log on to the FTP server.



Image source



Video for windows comp.: Check this box if you want to use the program with your Video for Windows compatible video capture board. Press the setup button to display the Video for Windows configuration dialogs

WinVision: Check this box to use the program with the WinVision Pro frame grabber board. Press the setup button to select image size, color or grayscale, video input etc.

File: Check to make InetVision not grab any images but simply load and display a jpeg file. (Useful only for testing purposes).



Image options

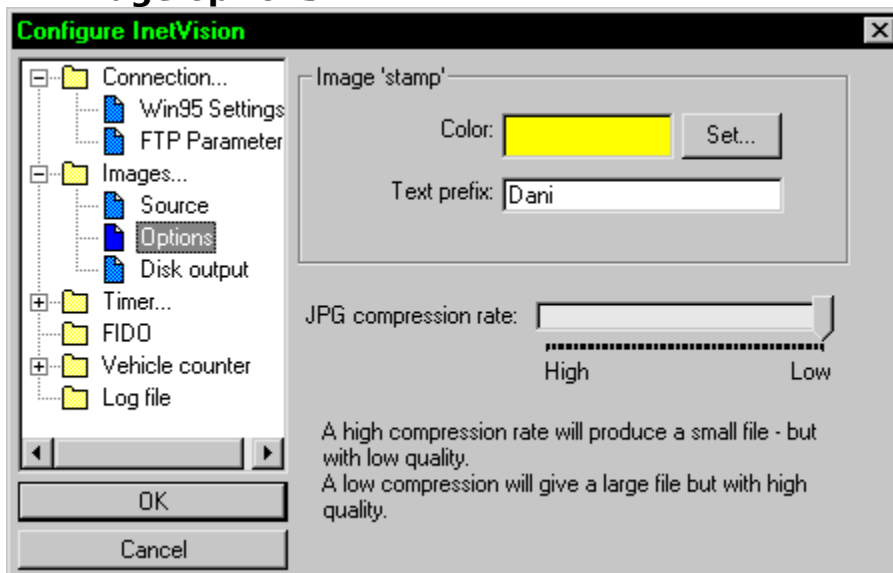


Image stamp: This is the text that will be written on the image before storing it in the HD./ transmitting it

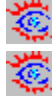


Color: The text color (do not use white - all other colors allowed.)



Text prefix: The start of the text will appear. After this text the date and time of capturing the image will be appended before printing this text in the upper left corner. In the lower right corner the text 'InetVision' and the version will be printed as well automatically.

JPG compression rate: Controls how much the image will be compressed before stored on the HD and transmitted. NB: This will not affect the image showed in the InetVision window - so to find a suitable value please try saving some pictures to disk and load using a graphics program.



Disk output

Filename prefix: The first part of the filename produced



Add time and date info: If this is selected the time of capturing the image will appear in the file name as well making each filename unique. If this is not selected then each new image captured will erase the previous image file.

Spool folder: Where the program will store the images before transmission

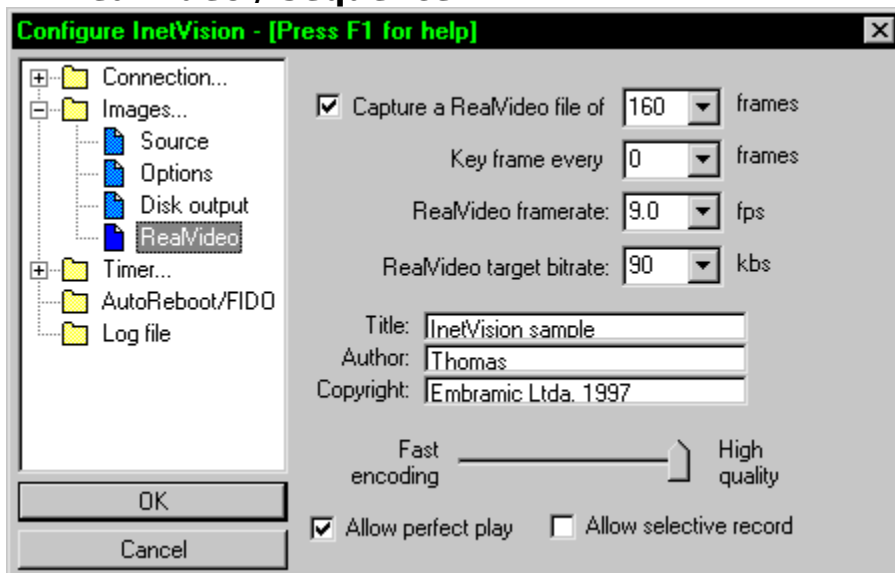
Backup: Where to move the files after transmission. PS: This option is turned on in another window...



After transmission rename file too: If you have problems with images 'cut off' in the middle of the picture when using a static filename turn this option on if your FTP server is running UNIX



RealVideo / Sequence



Capture a RealVideo file of n images: Turning this option on will make the program create a RealVideo encoded file with moving images instead of still images. To use it check the box and then select the number of frames (images) you want in this file.

Key frame every n frames controls which frames will be labeled as a key frame to the RealVideo encoder. Setting this to a low number might increase image quality in some cases but will inhibit the encoder from encoding according to the selected target bitrate - so use with care and experiment. Set it to zero to disable.

Use the **Real Video framerate** to specify how many images per second you want in your video file. But please note that this is the optimal rate at which images will be captured - the actual rate might be much slower depending on your PC's speed, the amount of memory in your system, the number of frames in the file and finally what kind of frame grabber you use.

The length of the video sequence - in seconds - will be the number of frames selected divided by the framerate.

RealVideo target bitrate is a setting used by RealVideo to specify at which speed you and/or the viewer of your file is connected to the Internet. Selecting a high value here will make the file more rich in details - but will require the viewer of your file to be connected at this speed. If he is not the quality delivered will be reduced by the RealVideo system.

Title, Author & Copyright is the texts displayed by the Real Player when playing back your RM file. (The maximum length per text is 256 characters).

Fast encoding vs. high quality: Controls what will be given highest priority when encoding the file; since InetVision for now does not encode live it is recommended to leave this set to high quality since the encoding speed does not matter when you are not encoding in real time (InetVision will first grab all the pictures - then later put them all into a .rm file)

Allow perfect play controls if users of the RealVideo player should be given a choice to use the player's perfect play option. Likewise **Allow selective record** controls if the user will be allowed to save this as a file.

For more information about these settings please consult the RealVideo WEB site found at <http://www.real.com>

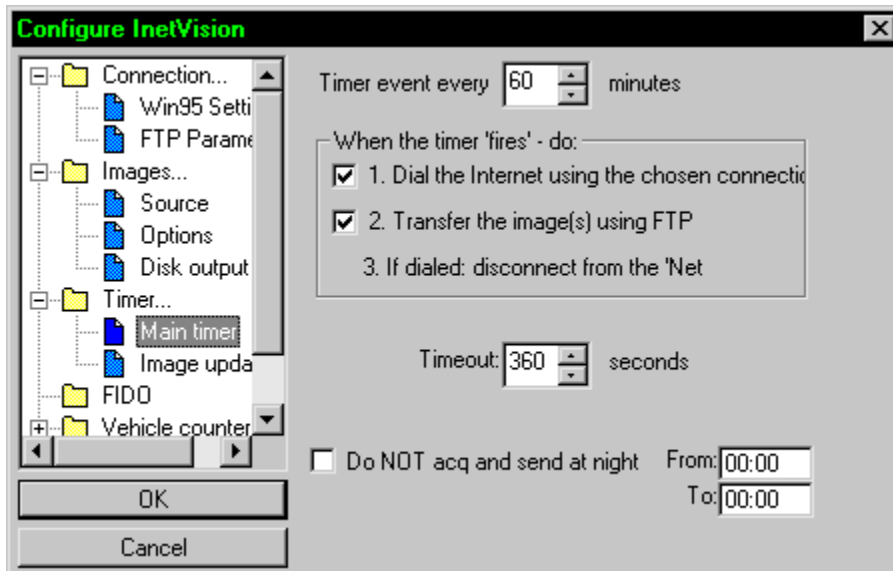
When encoding a video file (or in the light version: A sequence of jpeg pictures) a button labeled 'Stop !' becomes visible in the main window of InetVision; press it to stop capturing / encoding.

The RealVideo feature is not available in the light version of InetVision. Instead this is implemented as

Capture a sequence of n images: Turned on this will capture n pictures as quick as possible and then save each one in a separate jpeg file.



Main timer



Timer event every xx minutes: Used to specify how often InetVision will try to transmit data to the Net. (At this time it will always capture an image before proceeding). **Important:** If you are using the road viewer version and using the vehicle counter functions to produce a HTML page and/or a CSV file this option **must** be set to 30 minutes to function properly !

Dial the Internet: Turn on to make the program connect to the Net using your modem. If you have a permanent connection to the Net turn this option off.

Transfer the images using FTP: Will in most cases be turned on - but leaving it off enables you to only use InetVision to capture and save images to your HD.

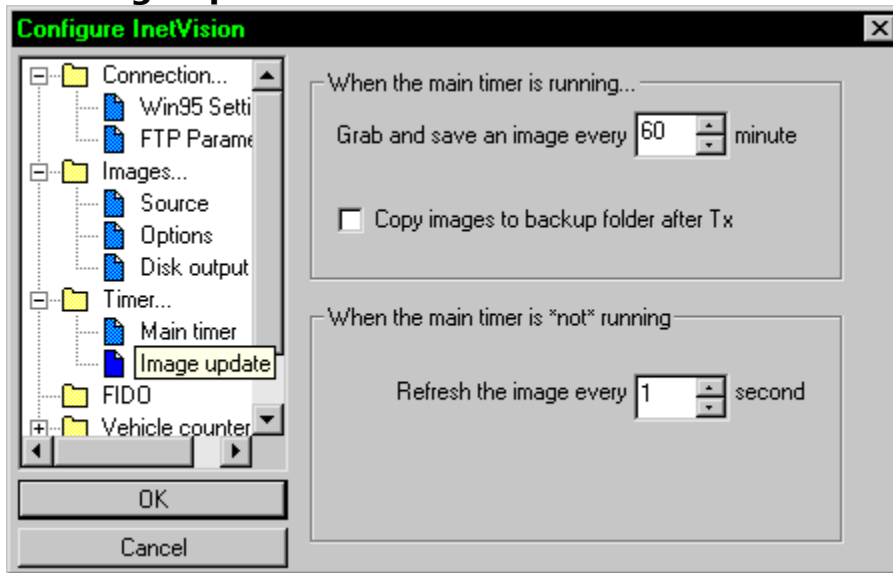
Timeout: The maximum number of seconds InetVision will allow for the entire process of connecting and transferring files to the Net. Please choose this careful - if it is too short InetVision will abort the transmission after the time out. If it is too long then if there is an error occurring it will be too long before InetVision aborts and retransmits the data.

Do not acq and send at night: Will enable you to not make any transmission during a period of time.

NB: Do not use if you are using the vehicle counter.



Image update



When the main timer is running...

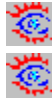
Grab and save an image every xx minute: How often to capture an image in addition to the ones already captured before transmission. (This will be without value if you are using a static filename and not a date/time filename !)



Copy images to backup folder: Turned on this option makes InetVision make a backup of the image file to the backup folder specified in Images/Disk output. But use with care - if you are capturing large images often this can make your HD fill up !

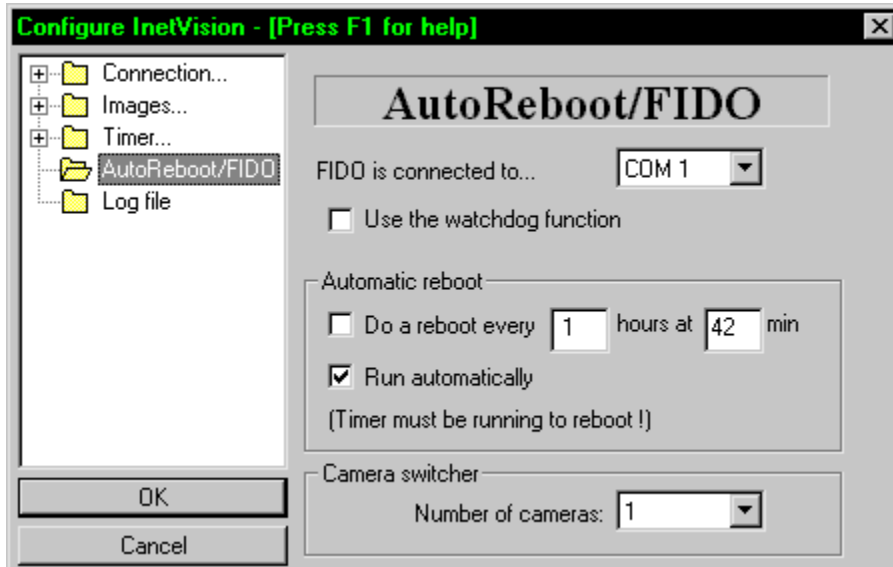
When the main timer is *not* running....

Refresh image every xx seconds: How often the image should be updated when the main timer is not running. Set to a low value (depending on the speed of your PC) when adjusting camera settings. Set to a large value (ex. 60 seconds) when you are finished setting up the program to lower the strain on your PC.



FIDO the digital dog

/ AutoReboot



What (or who) is Fido? Fido is a hardware watchdog and video switcher. It's a small box developed for InetVision. It contains a microprocessor controlled interface with the following functions:

1. Watchdog - The computer power plug is plugged into Fido's outlet, not on the wall. Fido's power plug is connected to the wall outlet. If the computer, the modem, Win95 or the program hangs, Fido will turn the computer off and on again in a few seconds. This ensures the user a reliable operation in remote places. (Imagine this system running for months unattended in a non-stop operation and you will understand why Fido is so important.)

Also, you don't need to wait for the PC to hang. You may program Fido to power the computer off and on again at scheduled intervals, let's say at each 12 or 24 hours. In this case, Win95 will enter the shutdown mode when the reboot option is turned on in this page and some seconds later Fido will turn the PC off and on again.

2. Video Switcher - Fido has 8 RCA female connectors. You can plug up to 8 cameras to Fido and then plug him in your frame grabber board allowing a maximum of 8 different cameras connected to your InetVision system.

What is AutoReboot ? AutoReboot is a function of InetVision that will restart Windows 95 at preset intervals. It is similar to the reboot functions when using FIDO in the professional versions of InetVision except that it does not physically turn your PC on or off and hence it will not guaranty stable operation like using FIDO will - but it can improve the reliability of the system by preventing the accumulation of memory leaks in Win 95.



FIDO is connected to..: Select the serial communication port the FIDO box is connected to.



Use the watchdog function: If you have a FIDO connected to your system to protect it from Win95 hangs etc. your PC must get its power from the FIDO and this setting must be turned on. (If not turned on the FIDO will turn your PC off and on every 5 minutes)

Do a reboot every xx hours at yy minutes: Turned on InetVision will - if you are using FIDO - put Win95 in shutdown mode and stop triggering the FIDO to make the system shut down and reboot - if you are not using FIDO it will restart windows. (Use if you have problems with the system hanging because of the instability of Windows95.)

The first reboot 'base time' is always midnight - and then every xx hours from then. (A value > 12 is not recommended for xx.) Then the reboot will happen at yy minutes of the hour specified in xx..

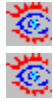
Example: Set to every 6 hours at 25 minutes will make the system reboot at 00:25, 06:25, 12:25 and 18:25

Run automatically: Turning on this option will make Windows 95 run InetVision every time you start Windows 95. Please turn this option on if you are using automatic reboot !

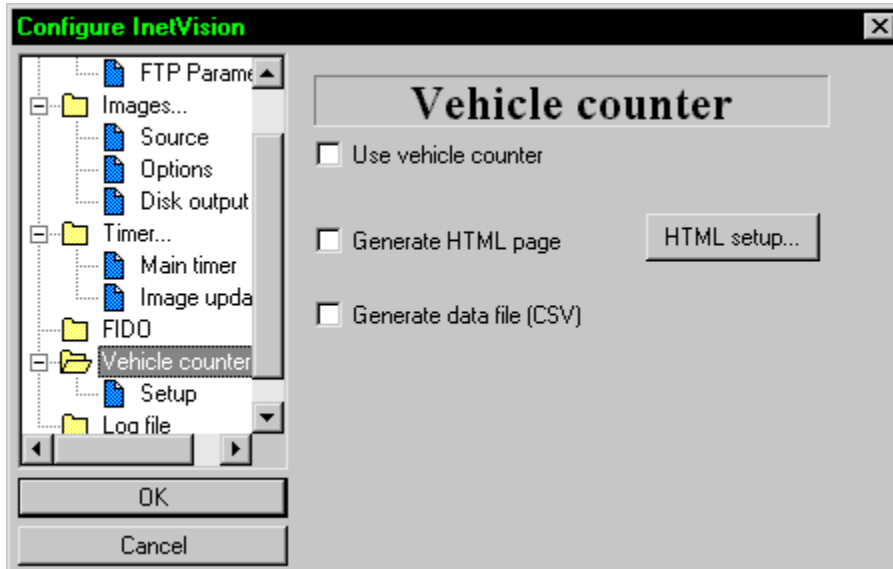


Camera switcher/ number of cameras: FIDO has a video switcher that will enable you to capture images from 8 different cameras on the same PC. Select the number of cameras you have connected (always use connectors in

sequence from connector 1 and upwards - ex. 1-2-3 and not 1-4-7)



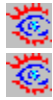
Vehicle counter



What is this vehicle counter ?

Embramic supplies a Vehicle Counter Device to be attached to the computer running InetVision. This is a microprocessor controlled equipment that interfaces inductive loop sensors (installed in the road surface) and the computer.

The vehicle counter is a very good tool to show the traffic conditions on the Internet (public or private use) not only in roads, but also in city streets, parking lots, etc.



Use vehicle counter: Turns on or off the entire counter function

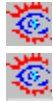


Generate HTML page: Turned on InetVision will automatically generate a HTML page and transmit this to the Net with updated data at every transmission. This function use a special set of small image files to make the graphical representation of the data - these files are available from embramic@embramic.com.br upon request. You can change the graphic files anyway you like - but not change the file names...

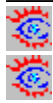
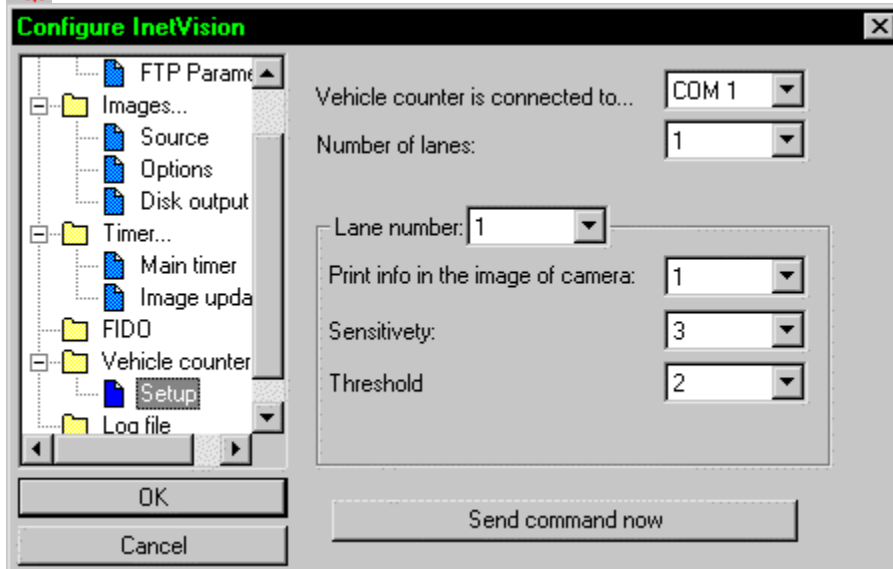


Generate data file (CSV): Turned on InetVision will generate output from the vehicle count in the form of a text file with comma separated values (CSV). This will be in the format

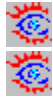
date, time, number of seconds of reading, number of cars in lane 1, lane 2 etc.



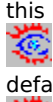
Vehicle counter setup



Vehicle counter is connected to...: Select the serial port your vehicle counter is connected to.



Number of lanes: Select the number of lanes you are counting vehicles in.



Lane number: Select this first before entering the settings below:



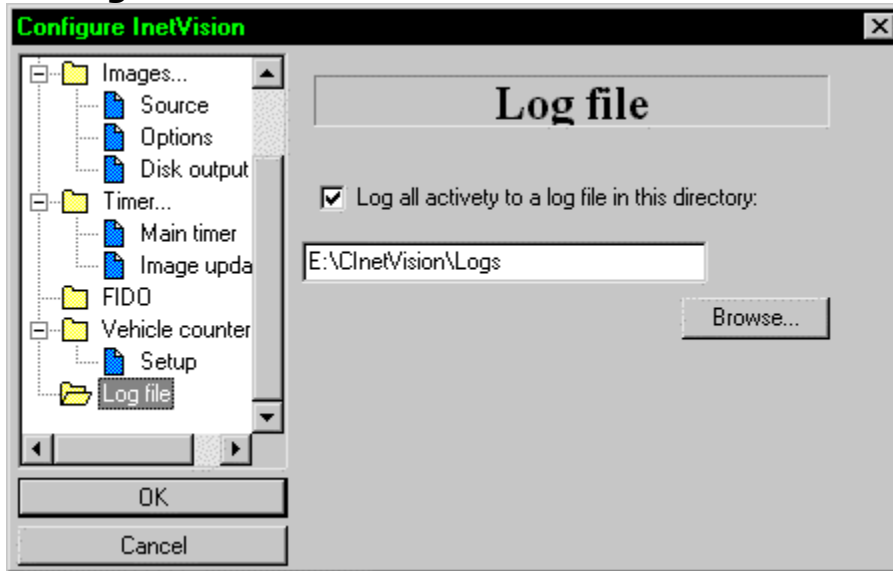
Print info in the image of camera: Select the camera. NB: This will also determine which HTML page to put this info in; number of cameras = the number of HTML pages created !

Sensitivity and Threshold: The parameters used by the vehicle counter firmware to read the loops. The default values of 4 and 3 should normally be used - but if you experience problems you can try changing them.

Send command now: Pressing this button will send the current parameters to the vehicle box - use to test different parameters.



Log file



Log all activity to a log file..: Turned on InetVision will create a log file and write there all events and errors. It is recommended this option is turned on - at least for the first 1-2 months of running an InetVision system to help finding the reason for errors occurring

Filename: Specify a filename. If you want to create a new log simply change the filename.



About InetVision - Contacting Embramic Ltda

About InetVision

InetVision © 1996, 97 Embramic Ltda & Thomas Ronneberg

Contacting Embramic Ltda

WWW

<http://www.embramic.com.br/>

This site will always carry the latest information about InetVision - including a FAQ file with detailed and updated information. There is also an online order form, a list of other sites using InetVision and lots more - please feel free to visit it at any time !

E-mail

techsupp@embramic.com.br (Technical support)

inetvision@embramic.com.br (Commercial enquiries)

Snail mail

Embramic Ltda

Rua Campos Salles, 157 / 302

Porto Alegre, RS

cep 90480-030

BRAZIL

Fax

+55 (51) 328-59-15

How to order InetVision

You can order your copy of InetVision using your VISA or MasterCard - either by

WWW online ordering form at <http://www.embramic.com.br/>

Email to inetvision@embramic.com.br (copy and paste the form in the next page of this help file to your email program)

FAX (print the next page and fill in) to # +55 (51) 328-59-15

Snail mail (also please use the form in the next page) to the address above



Empresa Brasileira de Microinformatica
Porto Alegre, Rio Grande do Sul, Brasil

This helpfile: © 1997 Thomas Ronneberg



InetVision order form

FAX +55 51 328-5915 or email to inetvision@embramic.com.br or snail mail to the address in the previous page.

YES - I want to order the following using my VISA or MasterCard ...

Product information (InetVision)

Version	Light - \$ 45	Standard - \$ 185	Professional - \$ 490
	Road Viewer - \$ 1950		Security - \$ 995
Quantity	_____		
Total - \$	_____		

Creditcard data

Card type	MasterCard	VISA
Cardholder's name	_____	
Card number	_____	
Expiry date	_____	
Signature	_____	

Personal information

Name	_____
Address	_____
City	_____
Country	_____
e-mail	_____

Where did you find InetVision ?

Comments
